

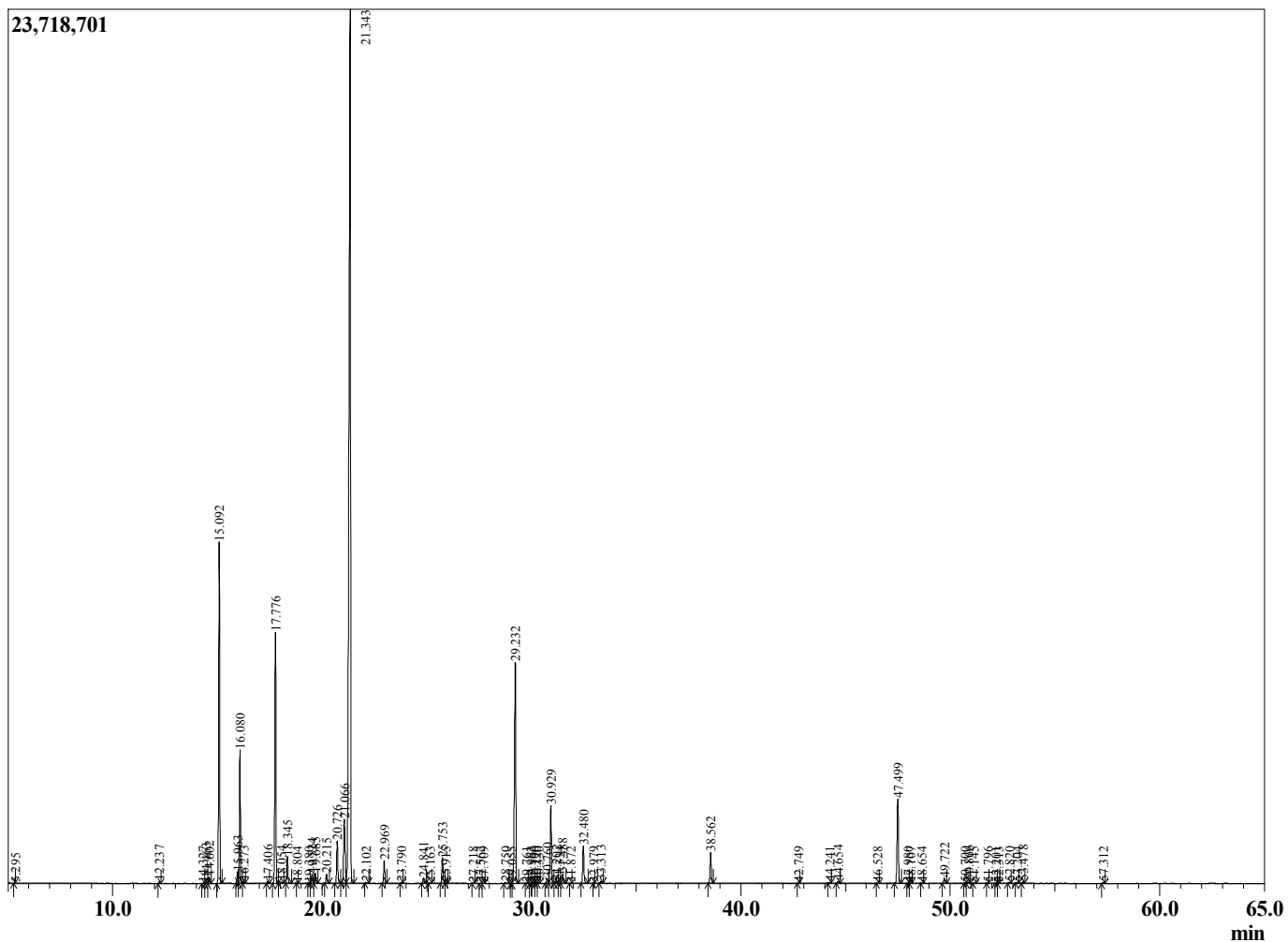
Sample Information

Sample Type : Essential Oil  
 Sample Name : Rosmarinus officinalis  
 Injection Volume : 0.10

Rosemary Cineole  
 Lot# MOK30-KT  
 Country: Morocco



Chromatogram Rosmarinus officinalis



R.Time	Name	Area%
5.295	3-Methylbutanal	0.00
12.237	Santene	0.06
14.327	Hashishene	0.02
14.463	Tricyclene	0.14
14.602	alpha-Thujene	0.19
15.092	alpha-Pinene	11.22
15.963	alpha-Fenchene	0.38
16.080	Camphene	4.31
16.273	Thuja-2,4(10)diene	0.04
17.406	Sabinene	0.07
17.776	beta-Pinene	8.75
18.054	3-Octanone	0.05
18.345	Myrcene	0.90
18.804	3-Octanol	0.00
19.380	Pseudolimonene	0.02
19.524	alpha-Phellandrene	0.33
19.685	delta-3-Carene	0.34
20.215	alpha-Terpinene	0.34
20.726	para-Cymene	1.62
21.066	Limonene	3.22
21.343	1,8-cineole	45.11
22.102	trans-beta-Ocimene	0.04
22.969	gamma-Terpinene	0.82
23.790	trans-Sabinene hydrate	0.04
24.841	Terpinolene	0.21
25.163	para-Cymene	0.01
25.753	Linalool	1.00
25.915	cis-Sabinene hydrate	0.02
27.218	alpha-Fenchol	0.02
27.562	Unidentified	0.01
27.709	alpha-Campholenal	0.01
28.750	trans-Pinocarveol	0.04
29.055	trans-Verbenol	0.01
29.232	Camphor	9.62
29.761	trans-beta-Terpineol	0.01
29.962	Unidentified	0.01
30.100	Pinocamphone	0.03
30.220	Pinocarvone	0.03
30.330	Isoborneol	0.04
30.760	delta-Terpineol	0.18
30.929	Borneol	3.12
31.202	Isopinocamphone	0.08
31.334	Unidentified	0.01
31.488	Terpinen-4-ol	0.38
31.872	para-Cymen-8-ol	0.01
32.480	alpha-Terpineol	1.50
32.979	Unidentified	0.01
33.313	Verbenone	0.07
38.562	Bornyl acetate	1.27
42.749	alpha-Cubebene	0.01
44.241	alpha-Ylangene	0.03
44.654	alpha-Copaene	0.09
46.528	cis-beta-Caryophyllene	0.01
47.499	beta-Caryophyllene	3.63
47.980	Unidentified	0.01
48.107	beta-Copaene	0.01

R.Time	Name	Area%
48.654	Aromadendrene	0.02
49.722	alpha-Humulene	0.19
50.700	10-beta-H-Cadina-1(6),4-diene	0.01
50.866	trans-Cadina-1(6),4-diene	0.05
51.145	alpha-Amorphene	0.01
51.796	beta-Selinene	0.00
52.201	alpha-Selinene	0.01
52.313	alpha-Murolene	0.01
52.820	beta-Bisabolene	0.03
53.204	gamma-Cadinene	0.04
53.478	delta-Cadinene	0.08
57.312	Caryophyllene oxide	0.04
		100.00